

AC 900
802.11ac/n/a/g/b

5GHz 2x2 MIMO Outdoor 802.11ac Wireless TDMA Base Station

WIS-L519AC | WIS-L520AC

Version 1.0

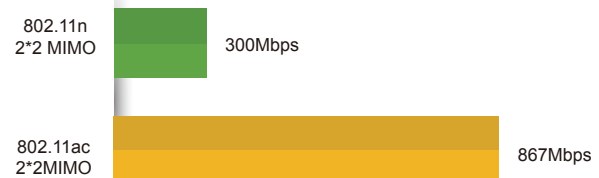
Product Overview

WIS-L519AC / WIS-L520AC are robust outdoor wireless base station featuring 802.11ac technology for high end wireless coverage and point to multi-point connections. Featuring 11ac high power wireless technology, the base station is ideal for WISP optimizing their network with better coverage ability and higher wireless capacity.

Features

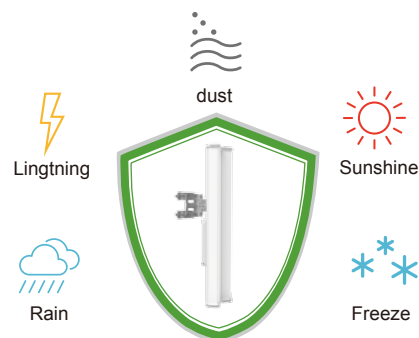
Extremely High Speed Connectivity

- 802.11ac wireless standard
- 4x speed than 802.11n devices
- Up to 867Mbps speed
- Gigabit LAN port



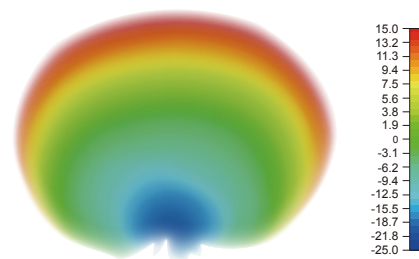
Updated 11AC Antenna

- Better shielding design
- Higher front-back ratio
- Superior beam performance



Robust Outdoor Ability

- Up to 8kV lightning protection
- Up to 24kV ESD protection
- IP67 waterproof housing
- -40C~70°C tolerance



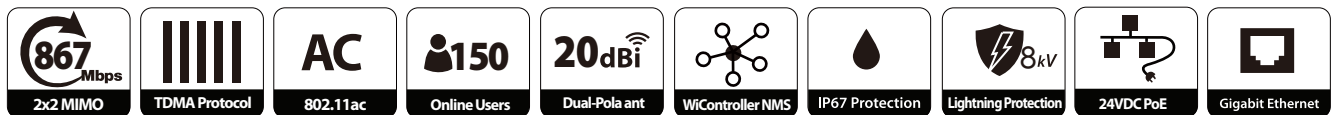
150+ Online Clients

- 720MHz Atheros CPU
- 128MB DDR
- Multiple SSID&VLAN

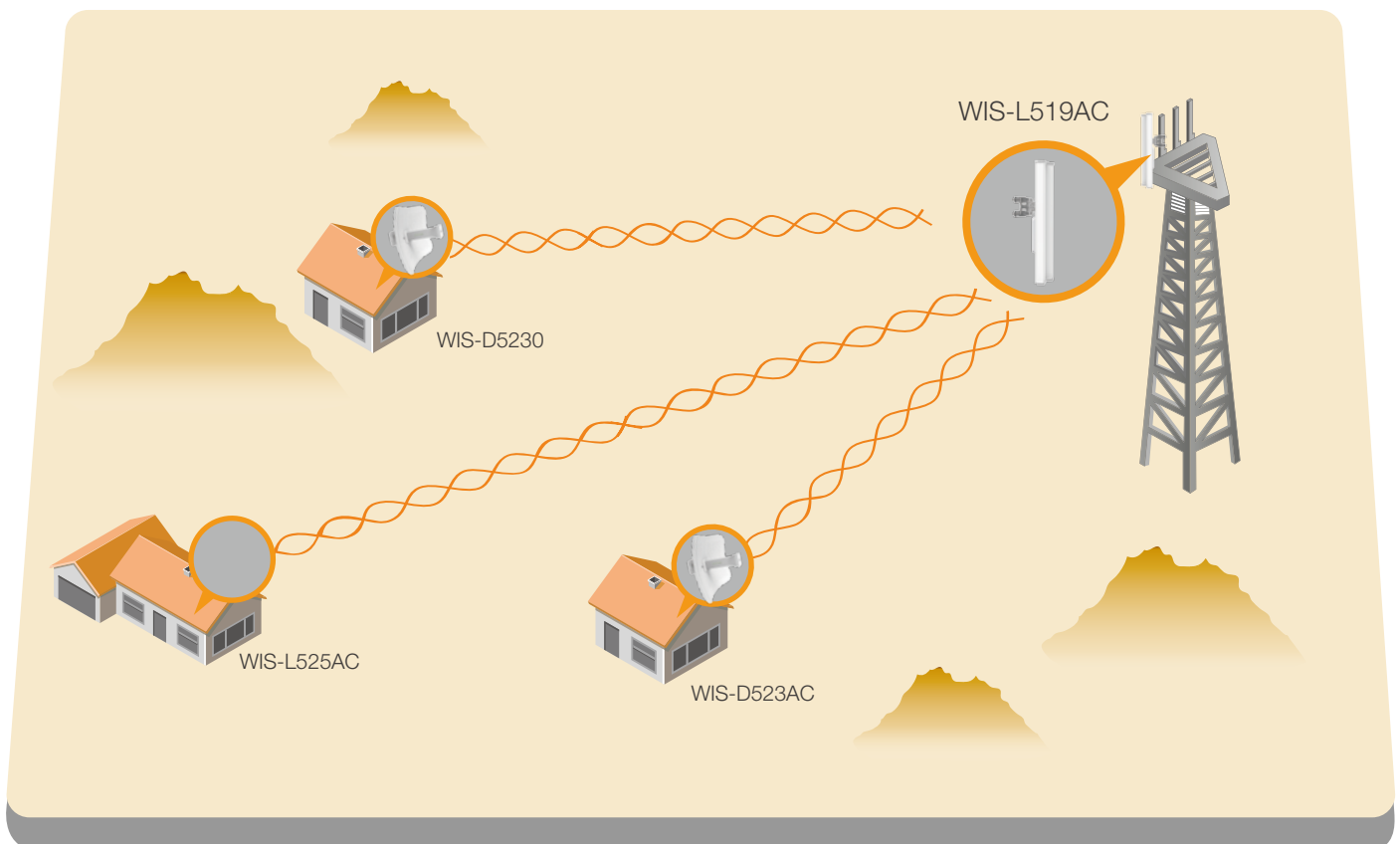


Features and Benefits

- WiD TDMA greatly improves the network scalability in throughput and latency
- Compliant with 802.11ac/n/a, speed up to 867Mbps
- Gigabit LAN port helps get maximum wireless performance
- High output transmission power and receive sensitivity optimized
- Easy deployment and adjustment with provided mounting kits
- 24V Passive PoE with remote reset for flexible deployment
- IP67 outdoor weather-proof housing and up to 24kV ESD protection



Network Diagram



Specification

> Radio

- 802.11ac/n/a radio (Atheros 720MHz)
- Speed up to 867 Mbps
- Frequency Range: 5.150-5.250GHz
5.250-5.350GHz
5.470-5.725GHz
5.725-5.825GHz
- Tx Power 27dBm±2
- Rx Sensitivity 867Mbps: -67dBm@10% PER
300M: -74dBm@10% PER
54M: -78dBm@10% PER
1M: -98dBm@10% PER

> Antenna

WIS-L519AC : 19dBi 120 degree sector antenna
WIS-L520AC : 20dBi 90 degree sector antenna

>Physical Parameters

- Dimension: 700*133*95mm
- Weight: 2.9kg
- Enclosure: Weatherproof ASA
- ESD Protection: 16kV
- Lightning Protection: 8kV
- Working Temp: -30 ~ 70°C
- Storage Temp: -40 ~85°C
- Working Humidity: 10%~95% non-condensing

> Power

- 24VDC, 0.75A
- Power Consumption: 10W

>Security

- Integrated Firewall
- WPA/WPA2;WPA-PSK/WPA2-PSK (AES/TKIP) Encryption; 64/128-bit WEP;

> Interfaces

- 1x 10/100/1000 Base-T Ethernet (Gigabit LAN with Passive PoE)
- Reset

> LED

- Power:On/Off
- LAN:On/Off/Flashing
- WLAN:On/Off/Flashing
- RSSI Signal: 1,2,3

>Warranty

- 2 Year

>Certification

- CE, FCC,RoHS

>Package content

- WIS-L519AC/WIS-L520AC
- Quick Setup Guide
- Power Adapter with Passive PoE
- Mounting kits

Wisnetworks Technologies Co., Ltd.

Sales e-mail: info@wisnetworks.com Web: www.wisnetworks.com

Community: community.wisnetworks.com

Address: No.77, FuTe West 3 Road, China (Shanghai) Pilot Free Trade Zone