

RADWIN SU-PRO 50 Series

Subscriber Unit - Data Sheet (RW5000/SU-Pro/5650/F54/ETSI/EMB)



RW-5650-2P54

Product Description

RW-5650-2P54 is an SLA and best effort (PRO) Subscriber Unit (SU). This SU provides high capacity access of up to 50 Mbps net aggregate throughput.

RW-5650-2P54 supports 5.4 to 5.8 GHz and complies with ETSI regulations.

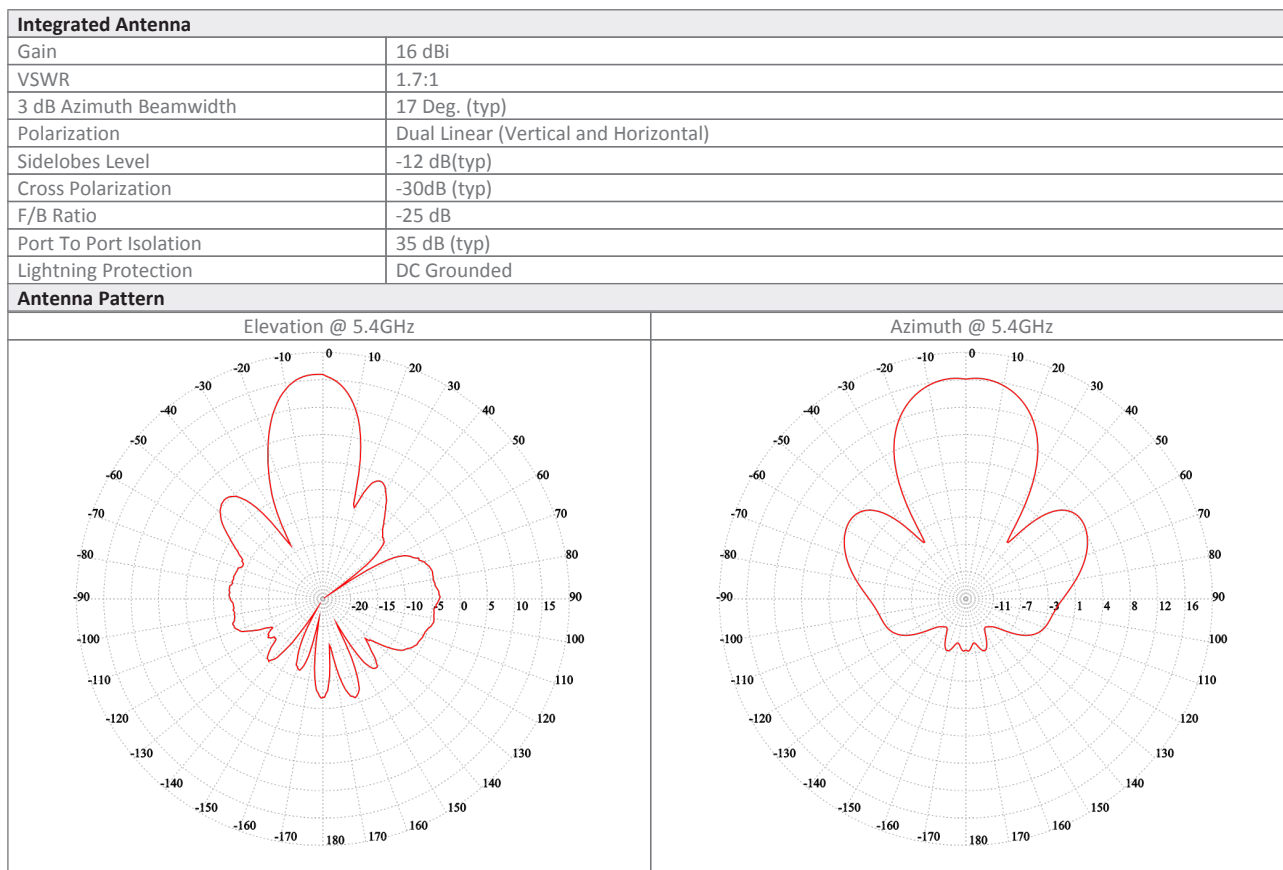
The radio comes with an embedded antenna and is connectorized (2 x SMA) for usage with the RADWIN TurboGain antenna. 3rd party antennas will be supported based on a future software upgrade.

Product Highlights

- Up to 50 Mbps net aggregated throughput, upgradable up to 200Mbps
- Long range - Up to 40 km / 25 miles
- Guaranteed Service Level Agreement (SLA) or Best Effort Service support
- Multiple Antenna configuration
 - - 16dBi embedded antenna
 - - 22dBi antenna when using the RADWIN TurboGain external antenna
 - - 3rd party external antenna (based on a future software upgrade)
- Short and constant latency
- Advanced MIMO, OFDM and Diversity technologies
- Robust and reliable operation in harsh conditions, extreme temperatures and obstructed line-of-sight scenarios
- IP-66 rating
- Unique simplified installation through Smartphone app.

Product Specifications:

Configuration					
Architecture	Outdoor Unit with an embedded antenna and connectorized for external antenna (2 x SMA)				
PoE to ODU Interface	Outdoor CAT-5e; Maximum cable length: 100m for 10/100BaseT and 75m for 1000BaseT				
Radio					
Max Capacity	50 Mbps net aggregate throughput; Upgradable to 200 Mbps with license key				
Range	Up to 40 km / 25 miles				
Channel Bandwidth	Configurable: 10, 20, 40, 80 MHz (for the default band); Dynamic Channel BW selection (20/40/80 MHz)				
Modulation	MIMO-OFDM (BPSK/QPSK/16QAM/64QAM/256QAM)				
Adaptive Modulation & Coding	Supported				
DFS	Supported (ETSI)				
Diversity	Supported				
Max Tx Power	24 dBm; max EIRP 30 dBm (for the default band)				
Duplex Technology	TDD				
Error Correction	FEC k = 1/2, 2/3, 3/4, 5/6				
Encryption	AES 128; FIPS 197				
Support Indoor units	RADWIN PoE device (included in the package); pinout: (+) pins 4/5, (-) pins 7/8				
Uplink / Downlink Allocation	Configurable: Symmetric or Asymmetric				
Layer 2	HUB Mode				
QoS	Packet classification to 4 priority queues according to 802.1P or Diffserv				
VLAN Support	802.1Q, QinQ, 4094 VLANs				
ODU Management	IPv4 dual-stack; SNMP v1; HTTP using web browser				
Supported Bands					
Band	CBW 10MHz [GHz]	CBW 20MHz [GHz]	CBW 40MHz [GHz]	CBW 80MHz [GHz]	Radio Compliance
5.4 GHz ETSI (default)	5.475-5.705	5.470-5.710	5.490-5.720	5.490-5.650	EN 301 893
5.8 GHz ETSI	5.735-5.865	5.735-5.865	-	-	EN 302 502
Mechanical					
ODU Dimensions	18.2(w) x 18.2(h) x 6.0(d) cm				
ODU Weight	0.5 kg / 1.10 lbs				
Power					
Power Feeding	Power provided over ODU-IDU cable				
Power Consumption	<12W				
Environmental					
Operating Temperatures	-35°C to 60°C / -31°F to 140°F				
Humidity	100% condensing, IP66				
Safety					
US/CAN (cTUVus)	UL 60950-1, UL 60950-22, CAN/CSA C22.2 60950-1, CAN/CSA C22.2 60950-22				
CE/IEC	EN/IEC 60950-1, EN/IEC 60950-22				
EMC					
FCC	47 CFR, Part15, Subpart B, Class B				
ETSI	EN 300 386, EN 301 489-1, EN 301 489-4				
CAN/CSA-CFI/IEC	CISPR 22-2010 Class B				



Ordering Info

Part Number: RW-5650-2P54

Description: RADWIN SU-PRO 50 ODU, with an embedded antenna and connectorized for external antenna (2 x N-type), supporting multi frequency bands at 5.x GHz, factory default 5.4 GHz ETSI.