

RADWIN HPMP HSU 550 Series

Subscriber Unit - Data Sheet

RW-5550-2H50



Product Description

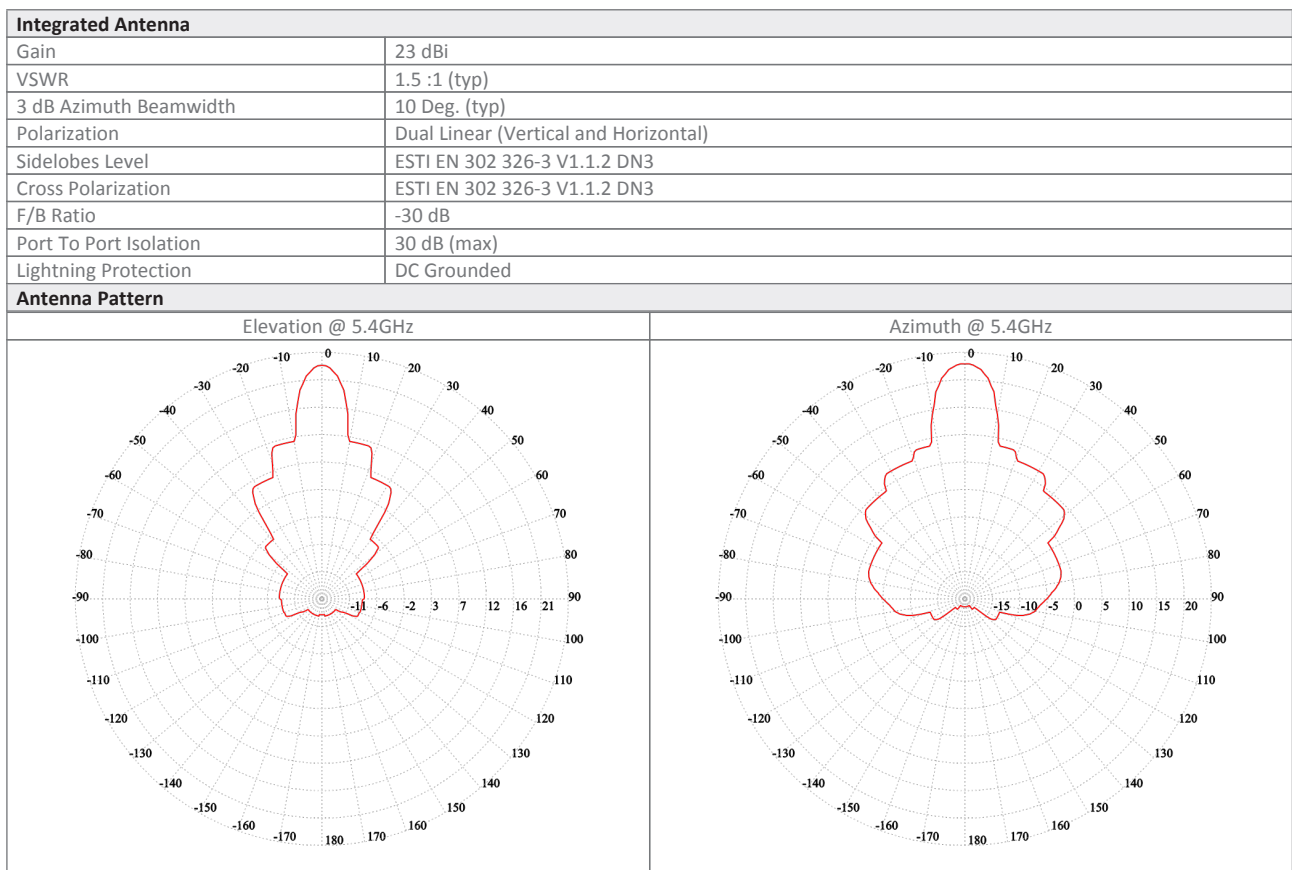
RW-5550-2H50 Subscriber Unit (HSU) provides high capacity access connectivity of up to 50 Mbps net aggregate throughput. RW-5550-2H50 supports 5.1 to 5.8 GHz and complies with ETSI regulations. The radio comes with an integrated antenna.

Product Highlights

- Up to 50 Mbps net aggregated throughput
- Long range - Up to 40 km / 25 miles
- Guaranteed Service Level Agreement (SLA) per HSU
- Exceptional short and constant latency
- Advanced MIMO, OFDM and Diversity technologies
- Robust and reliable operation in harsh conditions, extreme temperatures and non-line-of-sight scenarios
- Ease of operation and maintenance

Product Specifications:

Configuration				
Architecture	Outdoor Unit with an integrated antenna			
PoE to ODU Interface	Outdoor CAT-5e; Maximum cable length: 100m for 10/100BaseT			
Radio				
Max Capacity	50 Mbps net aggregate throughput; Upgradable to 100 Mbps with license key			
Range	Up to 40 km / 25 miles			
Channel Bandwidth	Configurable: 10, 20, 40 MHz (for the default band)			
Modulation	MIMO-OFDM (BPSK/QPSK/16QAM/64QAM)			
Adaptive Modulation & Coding	Supported			
DFS	Supported (ETSI)			
Diversity	Supported			
Max Tx Power	21 dBm; max EIRP 30 dBm (for the default band)			
Duplex Technology	TDD			
Error Correction	FEC k = 1/2, 2/3, 3/4, 5/6			
Encryption	AES 128; FIPS 197			
Support Indoor units	RADWIN PoE devices (RW-9921-101X)			
Uplink / Downlink Allocation	Configurable: Symmetric or Asymmetric			
Layer 2	HUB Mode			
QoS	Packet classification to 4 priority queues according to 802.1P or Diffserv			
VLAN Support	802.1Q, QinQ, 4094 VLANs			
ODU Management	IPv4/IPv6 dual-stack; SNMP v1 and v3; HTTP using web browser			
Supported Bands				
Band	CBW 10MHz [GHz]	CBW 20MHz [GHz]	CBW 40MHz [GHz]	Radio Compliance
5.4 GHz ETSI (default)	5.475-5.720	5.470-5.725	5.470-5.725	EN 301 893
5.3 GHz ETSI	5.150-5.350	5.150-5.350	-	EN 301 893
5.8 GHz ETSI	5.725-5.875	5.725-5.875	-	EN 302 502
Mechanical				
ODU Dimensions	30(w) x 30(h) x 8.5(d) cm			
ODU Weight	3.1 kg / 6.83 lbs			
Power				
Power Feeding	Power provided over ODU-IDU cable			
Power Consumption	<12W			
Environmental				
Operating Temperatures	-35°C to 60°C / -31°F to 140°F			
Safety				
FCC/IC (cTUVus)	UL 60950-1, UL 60950-22, CAN/CSA C22.2 60950-1, CAN/CSA C22.2 60950-22			
ETSI	EN/IEC 60950-1, EN/IEC 60950-22			
EMC				
FCC	47 CFR Class B, Part15, Subpart B			
ETSI	EN 300 386, EN 301 489-1, EN 301 489-4			
CAN/CSA-CEI/IEC	CISPR 22-04 Class B			



Ordering Info

Part Number: RW-5550-2H50

Description: RADWIN HSU 550 ODU, with an integrated antenna, supporting multi frequency bands at 5.x GHz, factory default 5.4 GHz ETSI.